

## CODE NUMBER

3366123

## DESCRIPTION

Sloan® XLERATOR® Sensor-Operated Wall - Surface Hand Dryer  
EHD-501, HEPA110/120V, Sloan® XLERATOR® Sensor-Operated Wall  
- Surface Hand Dryer.

## DETAILS

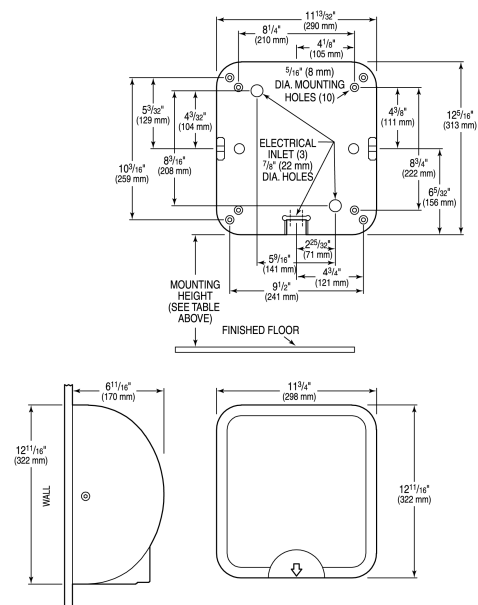
- Finish: Brushed Nickel (BN)
- Voltage: 110/120V ( )
- Wattage: 50/60Hz ( )
- Amperage: 11.3-12.2 ( )
- Mounting: Wall - Surface
- Power Type: Hardwired
- Depth: 6 86/125" (170mm)
- Height: 12 11/16" (322mm)
- Width: 11 3/4" (298mm)

## FEATURES

- Series commutated, through-flow discharge, vacuum type motor/blower combination
- Infrared Optical Sensor with thirty-five (35) second lockout feature
- Air velocity of 16,000 LFM (linear feet per minute) at an outlet temperature of 135°F/57°C at a 72°F/22°C ambient room temperature
- Decibel Rating of 78-80 dB
- HEPA Filter
- 95% cost savings vs. paper towels
- Electric Specifications: 110-120V - 11.3-12.2 Amps, 50/60 Hz
- Adjustable speed, sound and heat control
- Heating element constructed of Nichrome wire and protected by an automatic resetting thermostat
- One piece heavy-duty rib reinforced die cast zinc alloy housing
- Bright chrome plate or chip-proof electrostatically-applied epoxy finish
- Available in Polished White, Matte White, Polished Chrome, Brushed Nickel and Graphite
- Tamper-proof cover fasteners are included

## DOWNLOADS

- [Sloan XLERATOR and Sloan XLERATOR Eco Hand Dryer Instructions](#)
- [EHD-501 Series Hand dryers Repair and Maintenance Guide](#)
- [Additional Downloads](#)



## COMPLIANCES & CERTIFICATIONS



(BAA Compliant, cUL Certified, EPD, HEPA, Proposition 65, UL Certified, WELL Building Standard)

## RECOMMENDED SPECIFICATION

Sloan Xlerator Sensor Operated Hand Dryer. 120V/110V  
Brushed Nickel Finish.

## NOTES

All information contained within this document subject to change without notice.

**Sloan 10500 Seymour Ave, Franklin Park, IL 60131**

Phone: 800.982.5839 • Fax: 800.447.8329 • [sloan.com](http://sloan.com)